



**59, rue Fernand Forest
BP 321 - Romagnat
63543 Beaumont cedex**

**Tel : + 33 (0) 4 73 26 49 17
Fax: + 33 (0) 4 73 27 57 88
E-mail: sotres@sotres.fr**

**With over 20 years on site experience *SOTRES*
is specialised in washing and preparing concrete
sands in quarries and sand pits.**



Unit composed of
44 x 22 tank
HR 300 pump 110 kW
Two hydrocyclones Ø 1000
Dewaterer N° 14
Sand production : 350 to/h



Washing and processing :

Concrete sand and industrial sand

Washing : Sand from sewer sludge and sand from dredging sludge

Water clarification by flocculation

Sludge pressing / Filter press

Bentonite sludge sand removal

Liquid solid separation



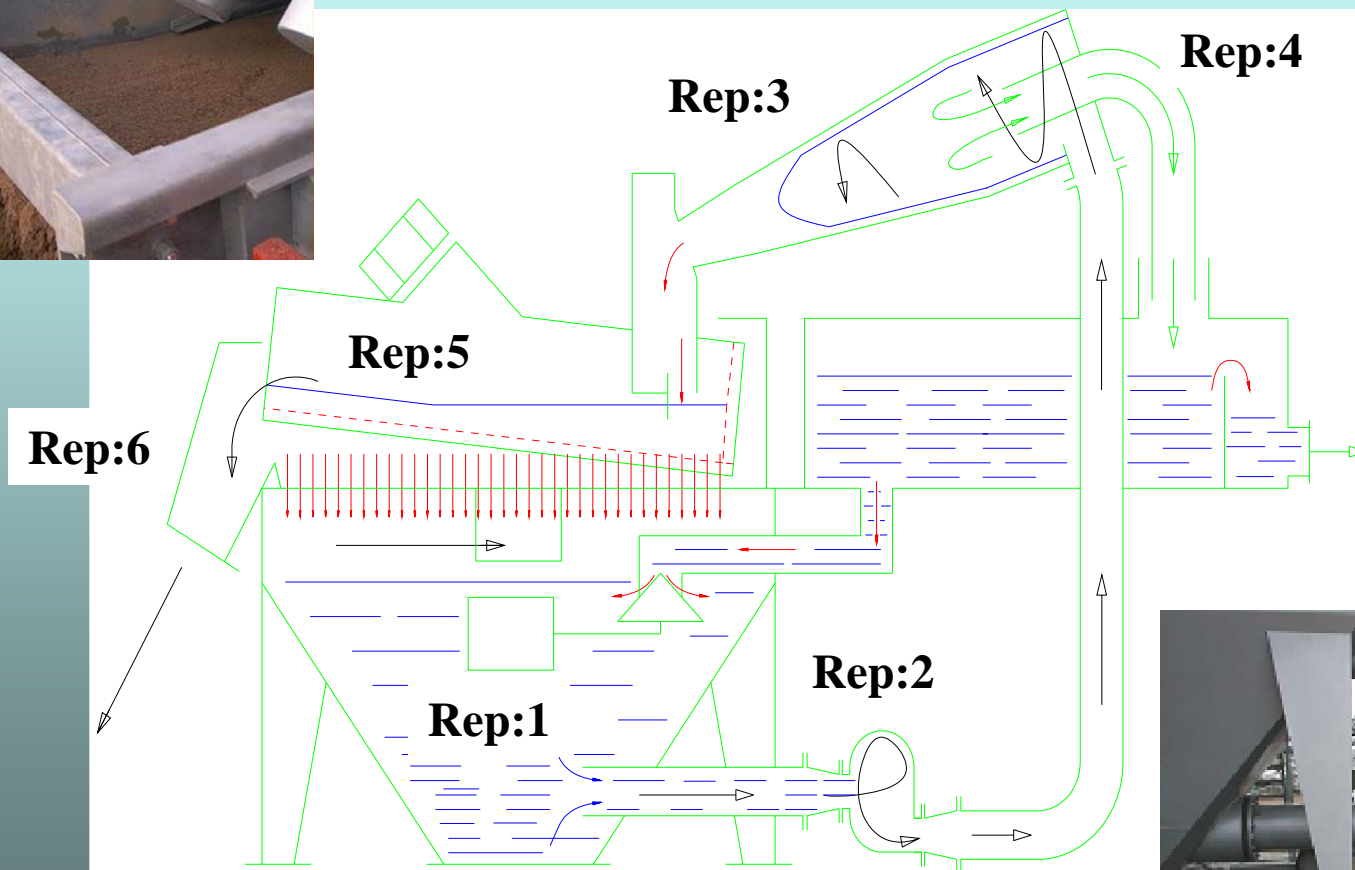
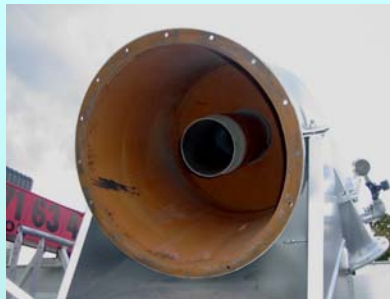
Sand treatment unit 300 to/h

SOTRES designs and manufactures sand washing units based on samples analysed in our laboratory or on the results of analyses supplied by the client . These elements mean that we can offer units designed to meet quality requirements (particle size curve , cleanliness , etc .)

The sand processing units are composed of modular elements which means that we can produce standard assemblies for the simplest installations or adapt the sand processing units to suit each site 's requirements and the matter to be treated.



Sand treatment unit 100 to/h



WORKING PRINCIPLE

The water and sand are collected in the tank, **item 1**. The pulpe which is conveyed by a centrifugal pump, **item 2**, feeds the cyclone, **item 3**, tangentially. The centrifugal movement inside it causes liquid - solid separation.

The clay, waste and ultra-fine particules are removed by suction by the overflow, **item 4**. Centrifugal force makes the solids and heavy elements spiral down the cone and are rejected onto the dewaterer, **item 5**.

With a rising slope and fitted with 2 vibrating motors and slotted screens, the dewaterer track makes the sand move along its whole length.

The outlet chute, **item 6**, collects the dried sand. Dewaterer undersize elements return to the tank.



Sand treatment unit 120 to/h



Sand pump units

Sand hydrocyclone - gangway



Hydro-separator

Dewaterer retractable rear chute

Industrial sand



Rotating dryer unit



Rotating vacuum dryer



Rotating vacuum dryer



Industrial sand



Sotres

APPAREILS **LAMEX** - caviem



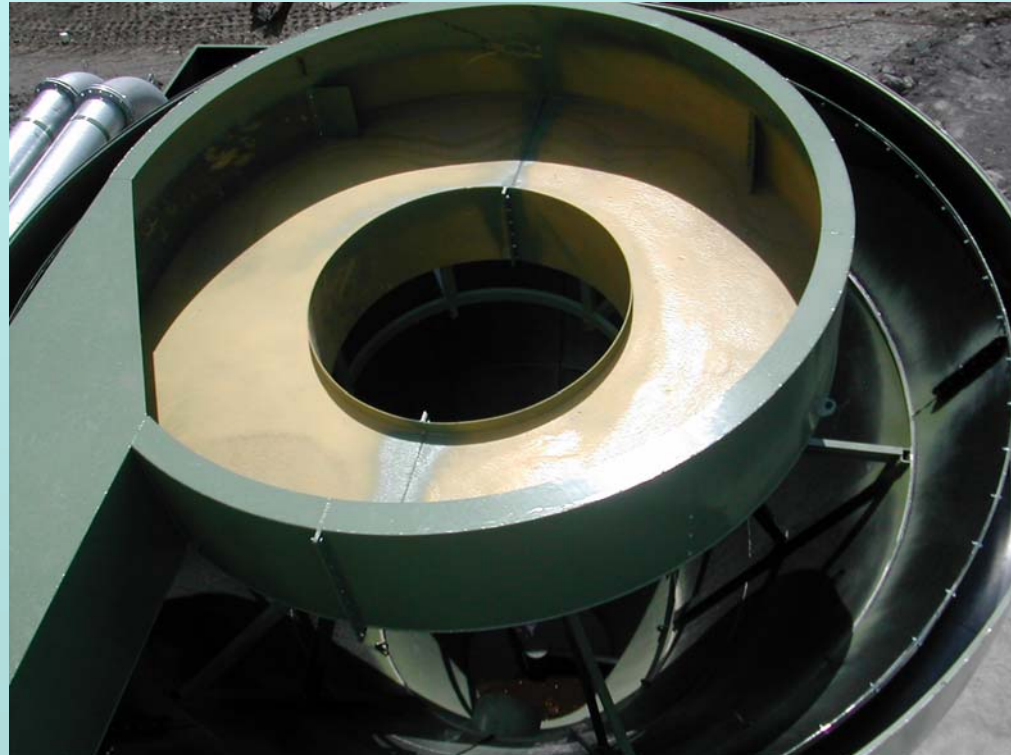
Rotating dryer unit



Hydroseparator



Hydroseparator





Sand treatment unit 80 to/h

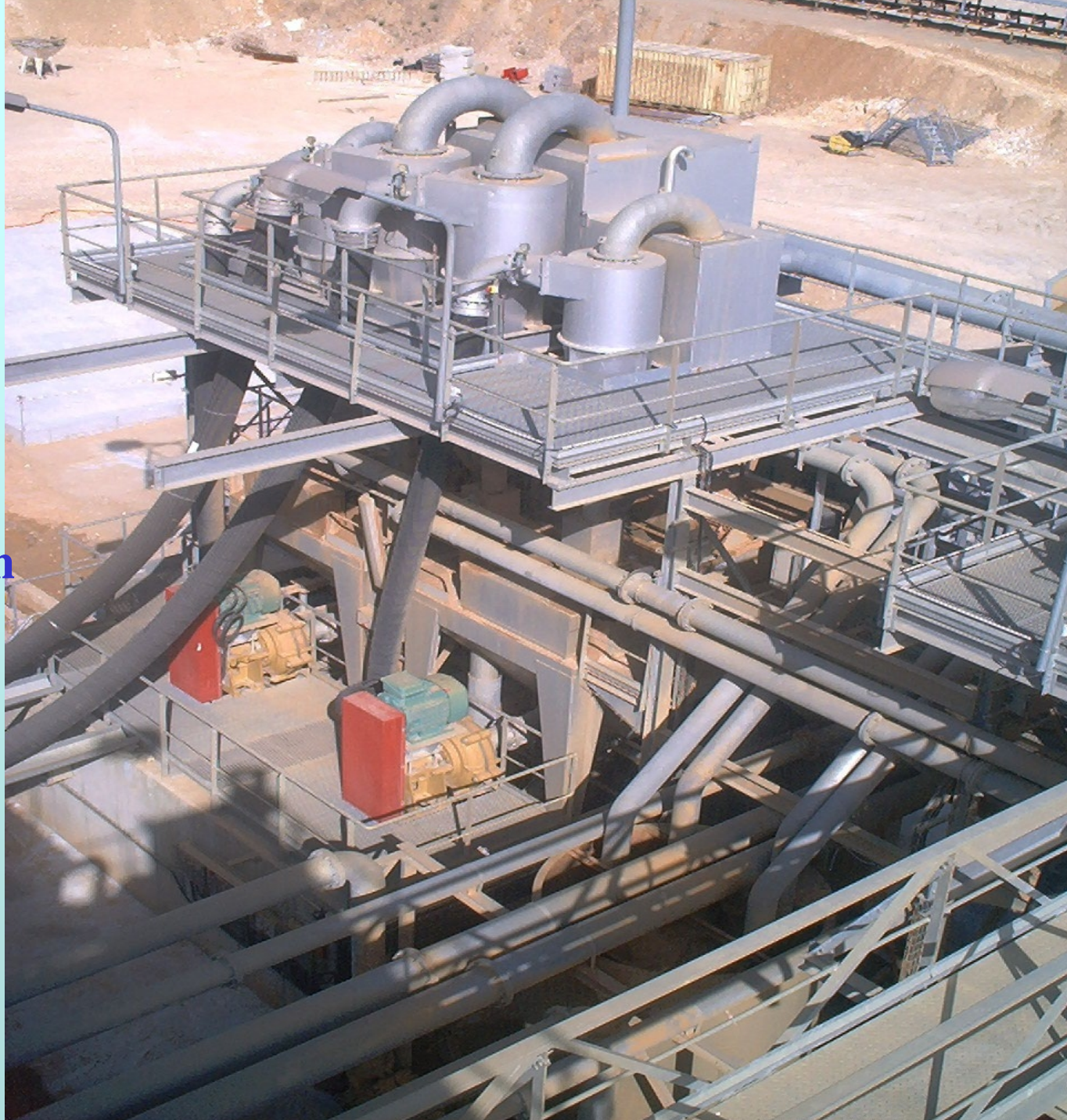


Sand treatment unit 120 to/h



Sand treatment unit 300 to/h

Treatment plant
with sand separation





Treatment plant with sand separation on dewaterer



Sand treatment unit 140 to/h



Double cycloning treatment unit



Sand treatment unit 120 to/h



Double cycloning treatment unit



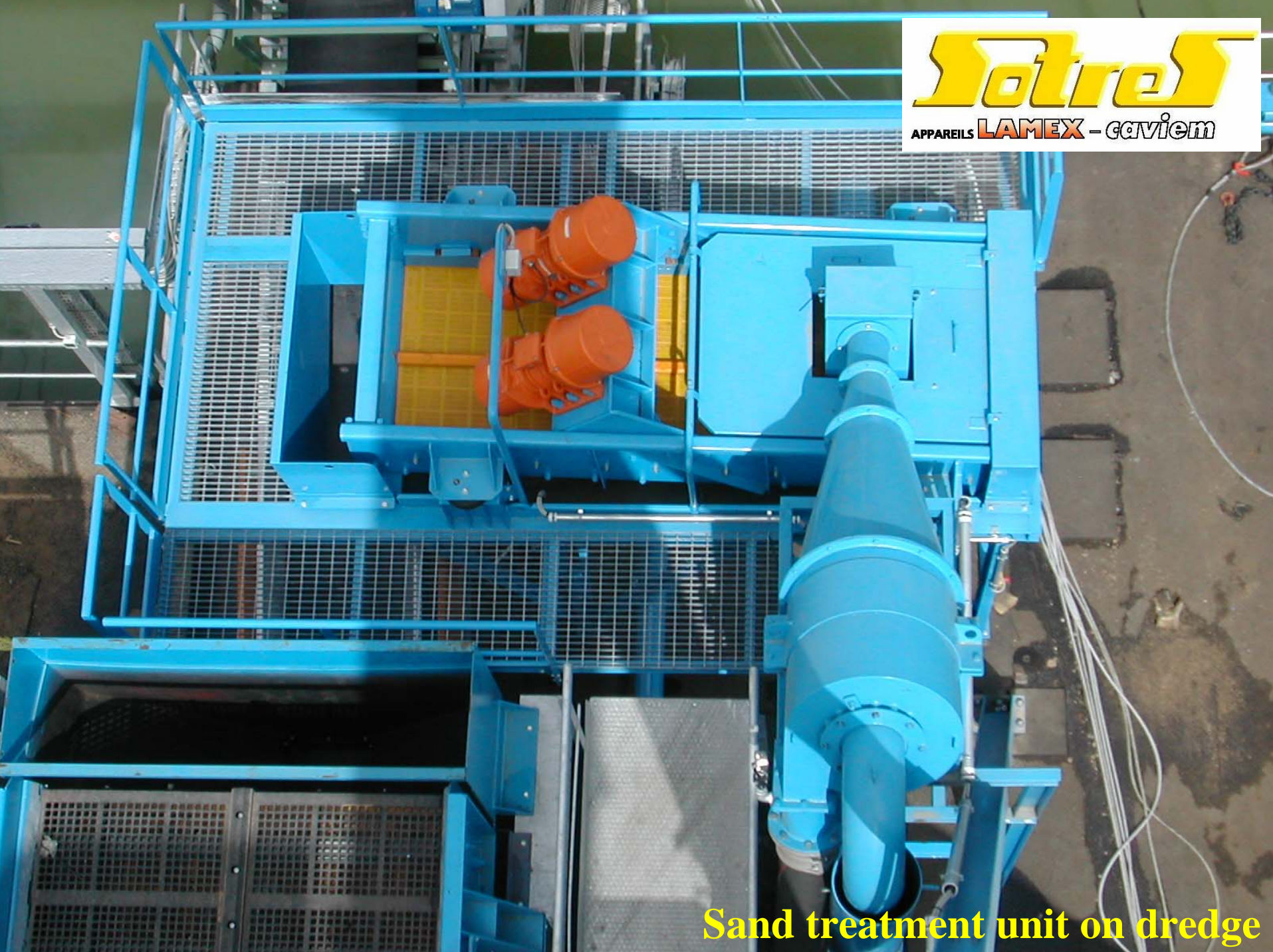
Double cycloning treatment unit

Sotres

APPAREILS **LAMEX** - caviem



Sand treatment unit 60 to/h



Sand treatment unit on dredge

Sotres

APPAREILS **LAMEX** - caviem



Sand dewaterer 60 to/h



Sand treatment unit on dredge



Sand dewaterer 40 to/h





Sand dewaterers : 2 x 120 to/h



Sotres
APPAREILS **LAMEX** - caviem

Sand treatment unit 2 x 120 to/h



Sand separation unit with static screen

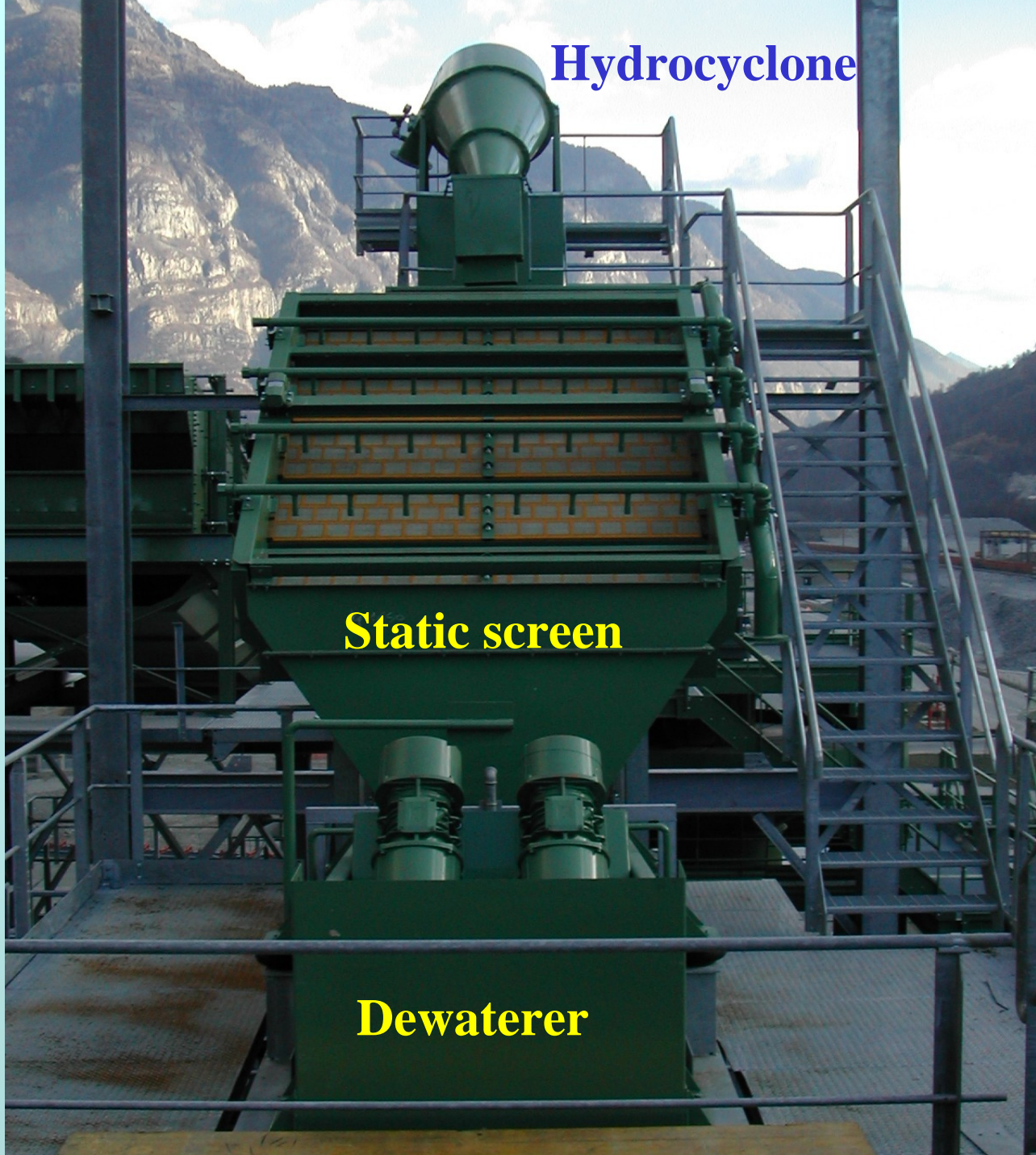


Hydrocyclone

Sand separation

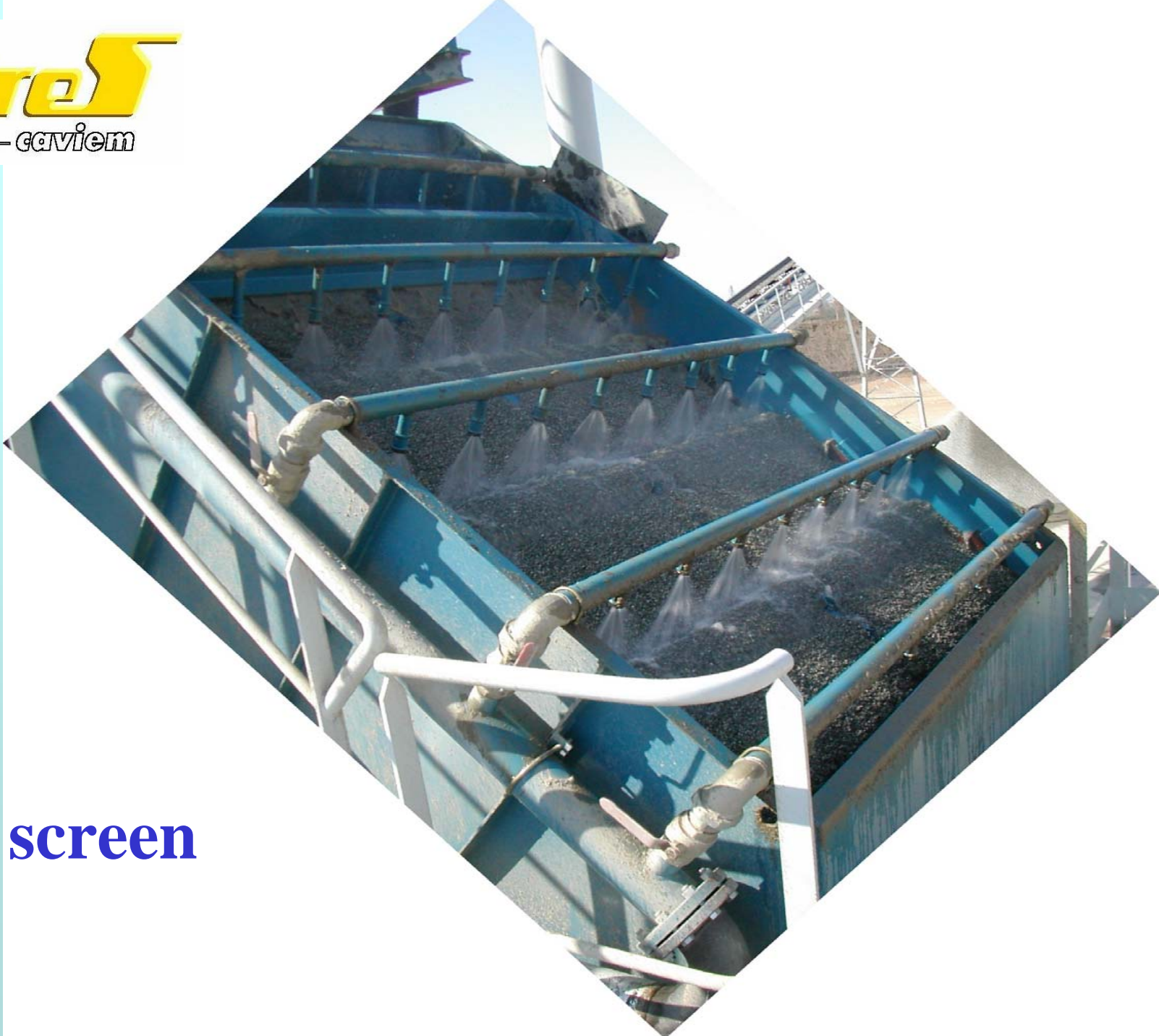
Static screen

Dewaterer



Sand separation
with static screen,
double cycloning.





Static screen

Static screen





Sotres
APPAREILS LAMEX - caviem

Static screen



Erection of a sand treatment plant (triple cycloning)

Sand : 150 to/h

Water : 800 m³/h



Erection of a glass sand treatment plant

Sand : 2 x 120 to/h

Water : 800 m³/h



Double cycloning treatment unit 100 to/h
Water treatment 350 m³/h



Sand treatment unit 220 to/h



Sand treatment unit 220 to/h
Water treatment 800 m³/h

**Sand treatment plant with sand separation
on dewaterer and static screens : 200 to/h**

